



ASX ANNOUNCEMENT

AGM PRESENTATION BY CEO

SYDNEY, Friday, 22 November 2013: Cellmid Limited (ASX: CDY) – Attached is the presentation to be given by Maria Halasz, the Chief Executive Officer, at Cellmid's Annual General Meeting to be held today at 11:00am at Cliftons, Level 13, 60 Margaret Street, Sydney, 2000.

End

Contact:

Maria Halasz, CEO

T +612 9221 6830



@mariahalas

Cellmid Limited (ASX: CDY)

Cellmid is an Australian biotechnology company developing innovative novel therapies and diagnostic tests for inflammatory diseases and cancer. Cellmid holds the largest and most comprehensive portfolio of intellectual property related to midkine and midkine antagonists globally. The Company's most advanced development programs involve using its anti-midkine antibodies for the treatment of cancer and inflammatory diseases. In addition, Cellmid is commercialising midkine as a biomarker for cancer diagnosis. Elevated midkine concentration in the blood and other body fluids is strongly indicative of cancer. For further information please see www.cellmid.com.au.

Midkine (MK)

Midkine is a multifunctional growth factor that is highly expressed during embryonic development. Midkine modulates many important biological interactions such as cell growth, cell migration and cellular adherence. These functions are relevant to cancer, inflammation, autoimmunity, ischemia, nerve growth/repair and wound healing. Midkine is barely detectable in healthy adults and only occurs as a consequence of the pathogenesis of a number of different disorders. Midkine expression is often evident very early in disease onset, even before any apparent physical symptoms. Accordingly, midkine is an important early marker for diagnosing cancers and autoimmune diseases. Finally, because midkine is only present in a disease context, targeting midkine does not harm normal healthy tissues.

CELLMID LIMITED

AGM PRESENTATION

22 November 2013

Maria Halasz CEO

This presentation contains forward-looking statements that are subject to risks and uncertainties. Such statements involve known and unknown risks that may cause the actual results, performance or achievements of Cellmid to be materially different from the statements in this presentation.

Actual results could differ materially depending on factors such as the availability of resources, the results of clinical studies, the timing and effects of regulatory actions, the strength of competition and the effectiveness of the Company's patent protection.

12 MONTH SHARE PRICE PERFORMANCE



12 milestones in 12 months

Cellmid

Midkine Cancer Therapeutics

Milestone: Completed
pre-clinical POC testing of
antibodies

Milestone: Commenced
preparations for pre-IND
studies

Milestone: Key patents
granted in US, EU, Japan
and AU

Midkine Cancer Diagnostics

Milestone: CxBladder
launched in USA

Milestone: Lung cancer test
validated on Luminex

Milestone: Fujikura option
to license exercised

Milestone: Abcodia
collaboration

Consumer health

Milestone: Evolis launched in
pharmacies

Milestone: Advangen Inc
acquisition

Milestone: Japanese
distribution increased

Milestone: Brand ambassador
appointed











Reduced
risk

Revenue since November 2012

	One-off	Repeat
Advangen		\$540,000*
Fujikura	\$600,000	
Pacific Edge	\$1,000,000	
Sub-total	\$1,600,000	\$540,000*

* As reported for the 2013 financial year

Milestone timetable

		4Q 2013	1Q 2014	2Q 2014	3Q 2014	4Q 2014	1Q 2015	2Q 2015	3Q 2015	4Q 2015
Cancer Therapeutic	IND enabling studies									
	Pre-IND meeting									
	IND ready, Phase 1/2a									
Cancer Diagnostics	Fujikura license									
	CxBladder royalty									
	LungDx (Quest)									
Consumer health	Chinese and EU distribution									
	US distributor									

 Key milestones

The above is subject to a number of internal and external factors including the availability of resources, the results of studies, the timing and effects of regulatory actions, the strength of competition and the effectiveness of the Company's patent protection.

Summary

High value cancer therapeutic product pipeline going into phase 1/2a studies in solid tumors

Revenue generating diagnostics division with multiple licenses and regular royalty expected from late 2014

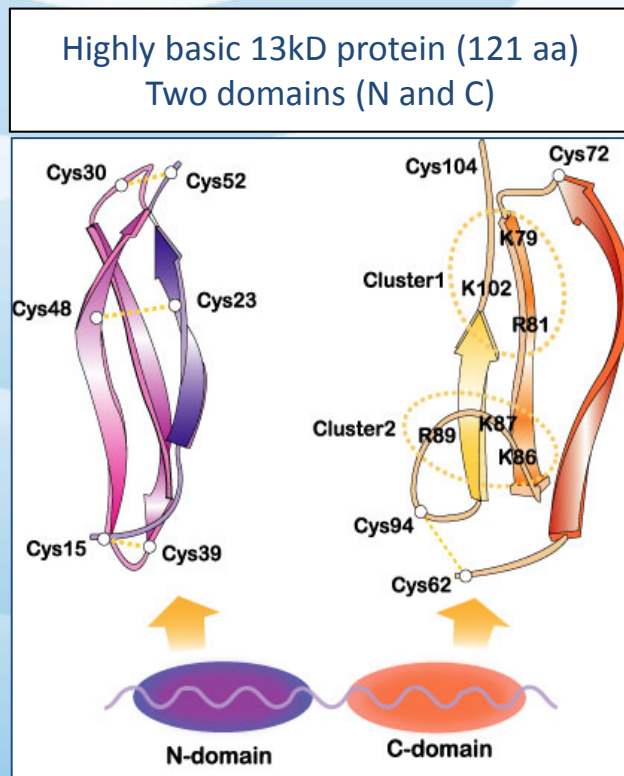
Revenue generating consumer health division with strong growth from emerging markets in 2014 onwards



High value assets underpinned by strong revenue growth

CANCER THERAPEUTICS

Midkine is an important cancer target

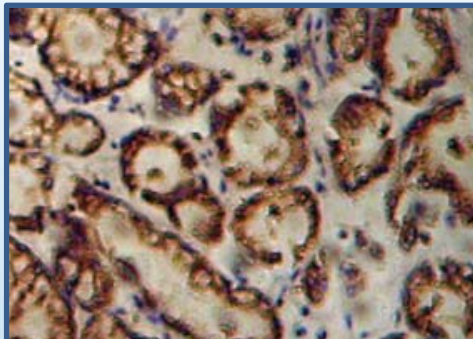


- Growth factor prominent in embryogenesis, but barely detectable in healthy adults
- In adults, midkine expression occurs in two settings:
 1. Inflammation
 2. Malignancy
- >90% amino acid identity between mammalian species

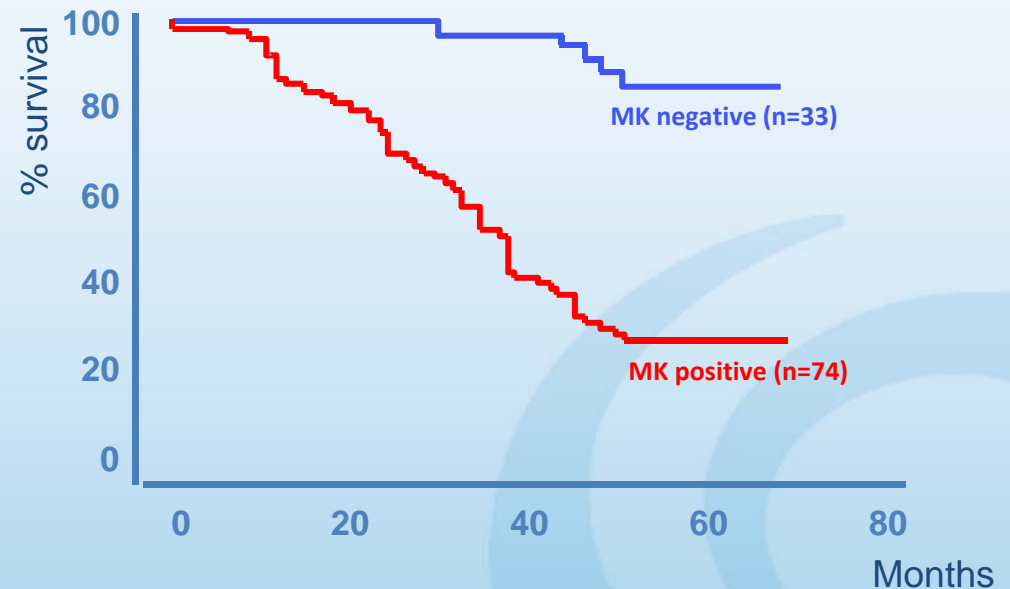


Allows strong validation in animal models

MK is highly prognostic of poor survival in gastric cancer



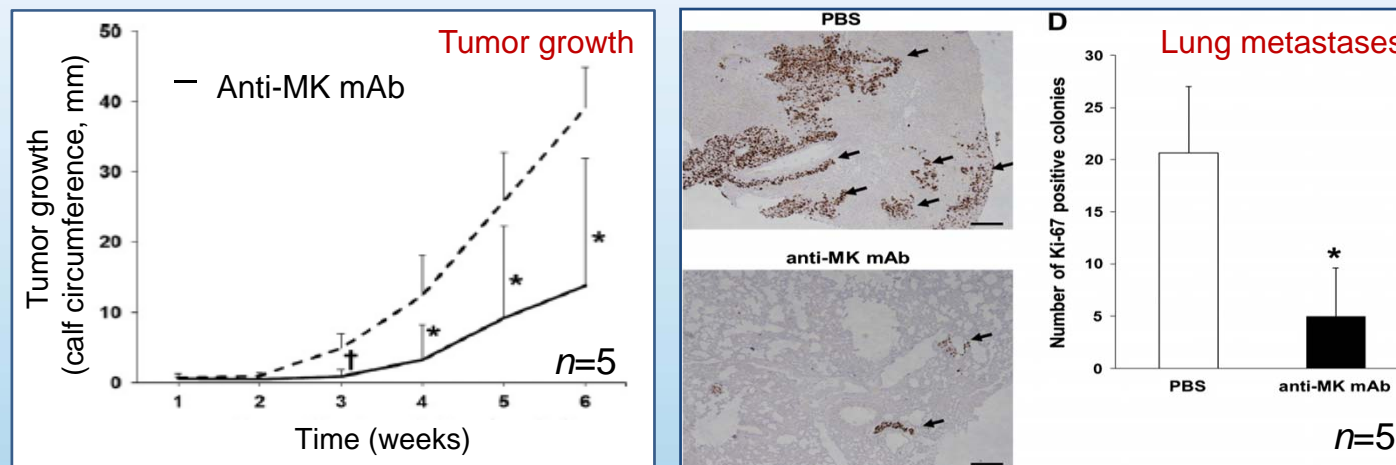
MK-positive IHC
Gastric adenocarcinoma



Zhao et al Mol Med Report 2012

Midkine antibody slows tumor growth

- Midkine antibody inhibits primary tumour growth and slows metastasis in osteosarcoma
- Intra-muscular xenograft (143B cell line)
- IP injection 24h post xenograft, then every 5 days to 42 days (dose 4mg/kg)



Sueyoshi et al Can Lett 2011

Planned phase 1/2a clinical study

- 1Q2014: Commence IND enabling studies
- 3Q 2014: Pre-IND meeting
- 4Q2014: Commence open label study in solid tumours
- 3Q2015: Expected early efficacy information
- 4Q2015: Expected completion of phase 1/2a
 - Advanced or end stage patients with prior chemotherapy
 - 12 patients in 4 groups of 3 each
 - Log 3 dose escalating (4 doses, 1 per week)

CANCER DIAGNOSTICS

MK is overexpressed in at least 26 different tumour types – license opportunities

Blank space: not tested
 Red: Licensed
 Blue: Not licensed yet

	Breast	Prostate	Ovarian	Cervical	Uterine	Lung (NSC)	Lung (SC)	Lung (brain mets)	Neuroblastoma	Glioblastoma	Medulloblastoma	Primitive neuroectodermal	Meningioma	Neurofibromatosis type I	Gastric	GI stromal	Bladder	Colorectal	Duodenal	Oral SCC	Oesophageal SCC	Hepatocellular	Bile Duct	Pancreatic	Thyroid	Osteosarcoma	Renal	CLL
Blood	<	<	<		<	<	<	<	<					<	<	<		<	<	<	<	<	<	<	<			<
Tissue	<	<	<	<	<	<	<	<	<	<	<	<	<		<	<	<	<		<	<	<		<	<	<		
Urine															<		<	<			<	<	<	<	<		<	

Diagnostic pipeline delivering revenue

	PRECLINICAL	CLINICAL	MARKET
CxBladder for bladder cancer (Pacific Edge)	Revenue generating, expect royalties from 2H2014		
MK as an early cancer marker (Japan) Fujikura	Revenue generating, expect royalties from 2H2015		
Lung cancer diagnostic (Quest)	Revenue generating, expect milestone and royalties post 2014		
MK metastatic colorectal diagnostic	Collaboration with John Hunter Hospital		
MK as a colorectal screening tool	Collaboration with Abcodia		
MK as a marker in glioblastoma	Phase 2 MK as companion marker		

CONSUMER HEALTH

First clinically validated topical hair growth product in 25 years

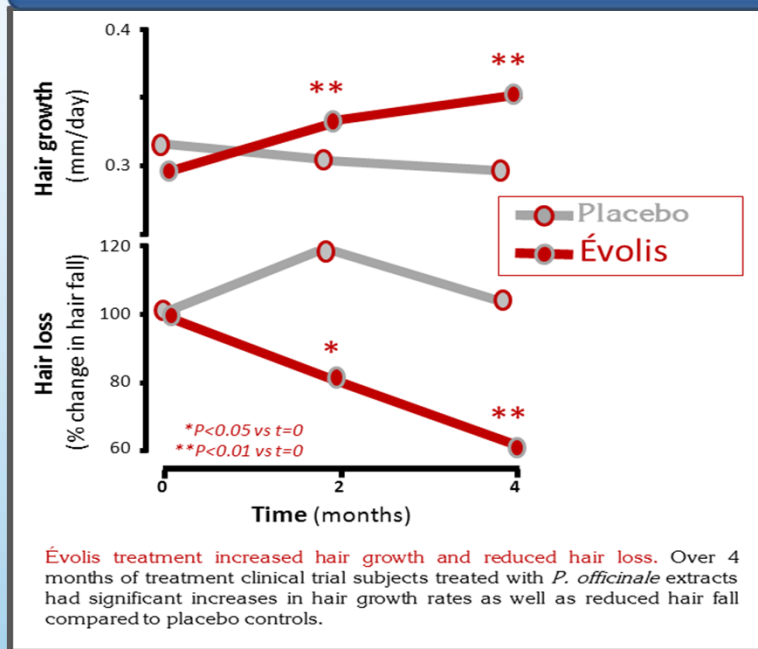


Inhibits FGF-5, a protein responsible for hair loss

- 21% increase in hair growth rate*
- 35% reduction in hair loss*
- Significant increase in growing follicles*
- 74% found the treatment beneficial for hair growth*

*Double blinded placebo controlled clinical study

Clinical study results



Australian launch confirmed market potential



	évolis
June 2012	<ul style="list-style-type: none">Launched commercial proof of concept in Australia (website, media, trade)
Dec 2012	<ul style="list-style-type: none">More than 700 pharmacies signed upPositive market response and solid early revenues
May 2013	<ul style="list-style-type: none">Acquired company with global rightsEstablished Japanese distributionImport permits in place to China

Thank you

www.cellmid.com.au



@mariahalasz